



HEATH CITY SCHOOLS



Facilities Committee Meeting
September 12, 2018

FANNING HOWEY

Thank You for coming!

Goals for today:

- OFCC refresher
- Understanding Building assessments
- Recap responses from last meeting
- Group discussions
- Exit ticket



Timeline

Today

- **September 12, 2018 : Facilities Committee Mtg #1**

Future meeting dates:

- October 10, 2018
- November 7, 2018
- November 28, 2018

Consensus by December 2018/January 2019

Targeting potential for a May 2019 bond issue



OFCC refresher

- Ohio Facilities Construction Commission
- Master Plan
- Segmented plan
- Assessments
- Enrollment projections
- Equity #
- State / Local share
- 2/3rds rule
- LFI's
- 350 student rule



OFCC Guidelines

The 350 Student Rule

- * Any building that is part of an OFCC co-funded project must have a minimum projected enrollment of 350 students**



Equity # UPDATE

- FY '18 : #362
 - 60% Local 40% State
- **FY '19 : #351**
 - **58% Local 42% State**



OFCC Building Assessments



Garfield Elementary

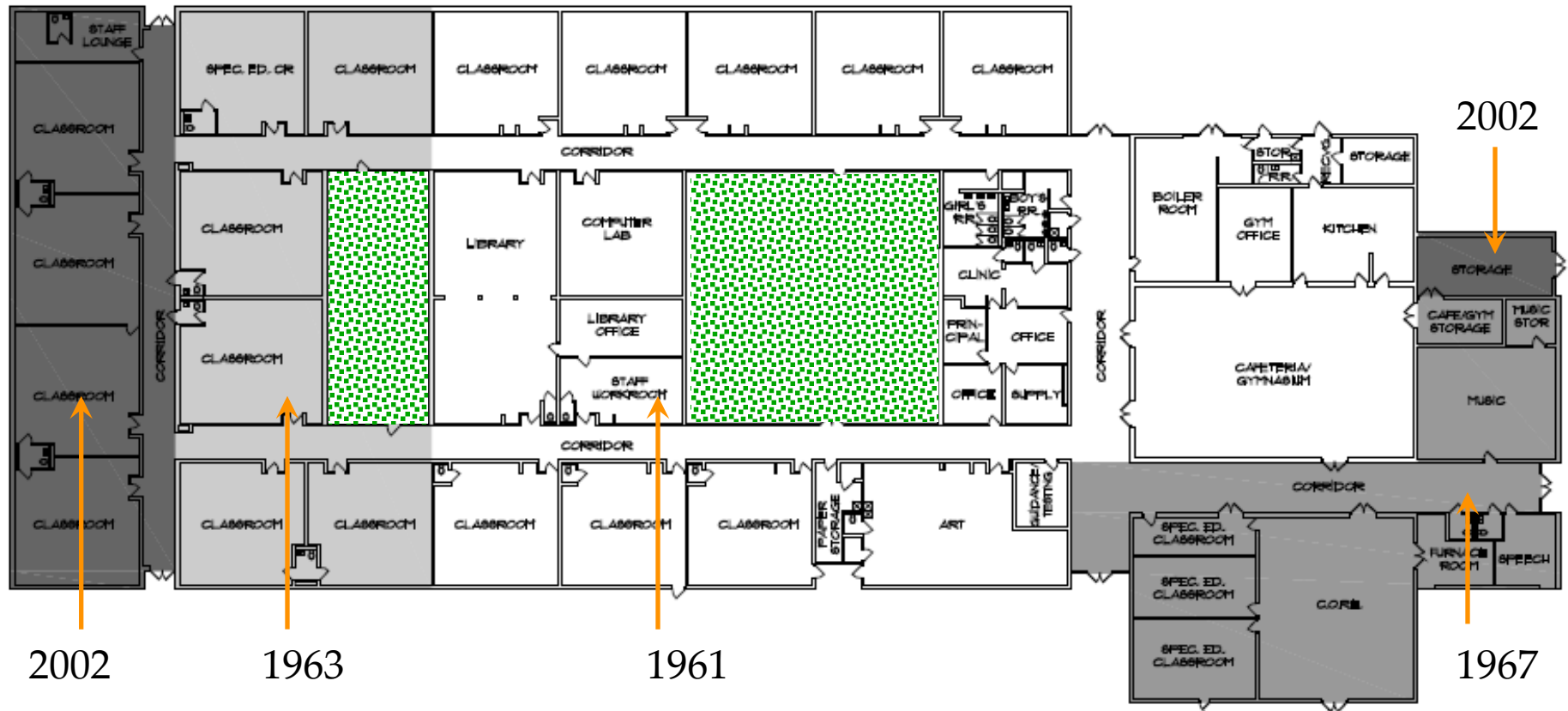


Custer Rd

S 30th St

Partridge Rd

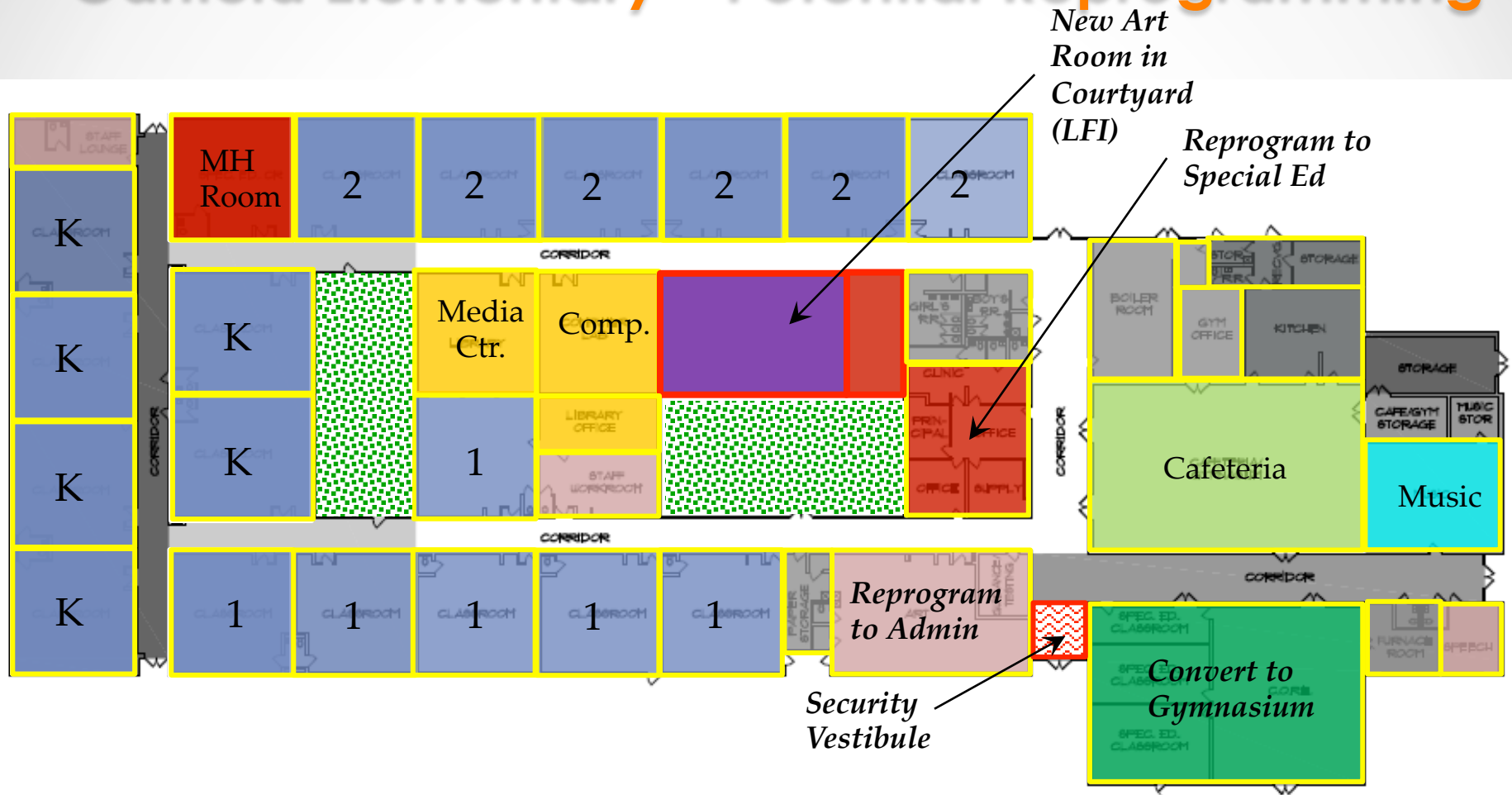
Garfield Elementary



44,715sf



Garfield Elementary – Potential Reprogramming



Garfield Elementary - Assessment

Total Renovation Cost: **\$7.3 million**

- HVAC \$1,525,000
- Roofing \$ 590,000
- Electrical systems \$ 725,000
- Finishes \$ 965,000
- Lighting \$ 223,000
- Handicap access \$ 140,000
- Life Safety \$ 150,000
- Loose Furnishings \$ 220,000
- Technology \$ 590,000



Stevenson Elementary



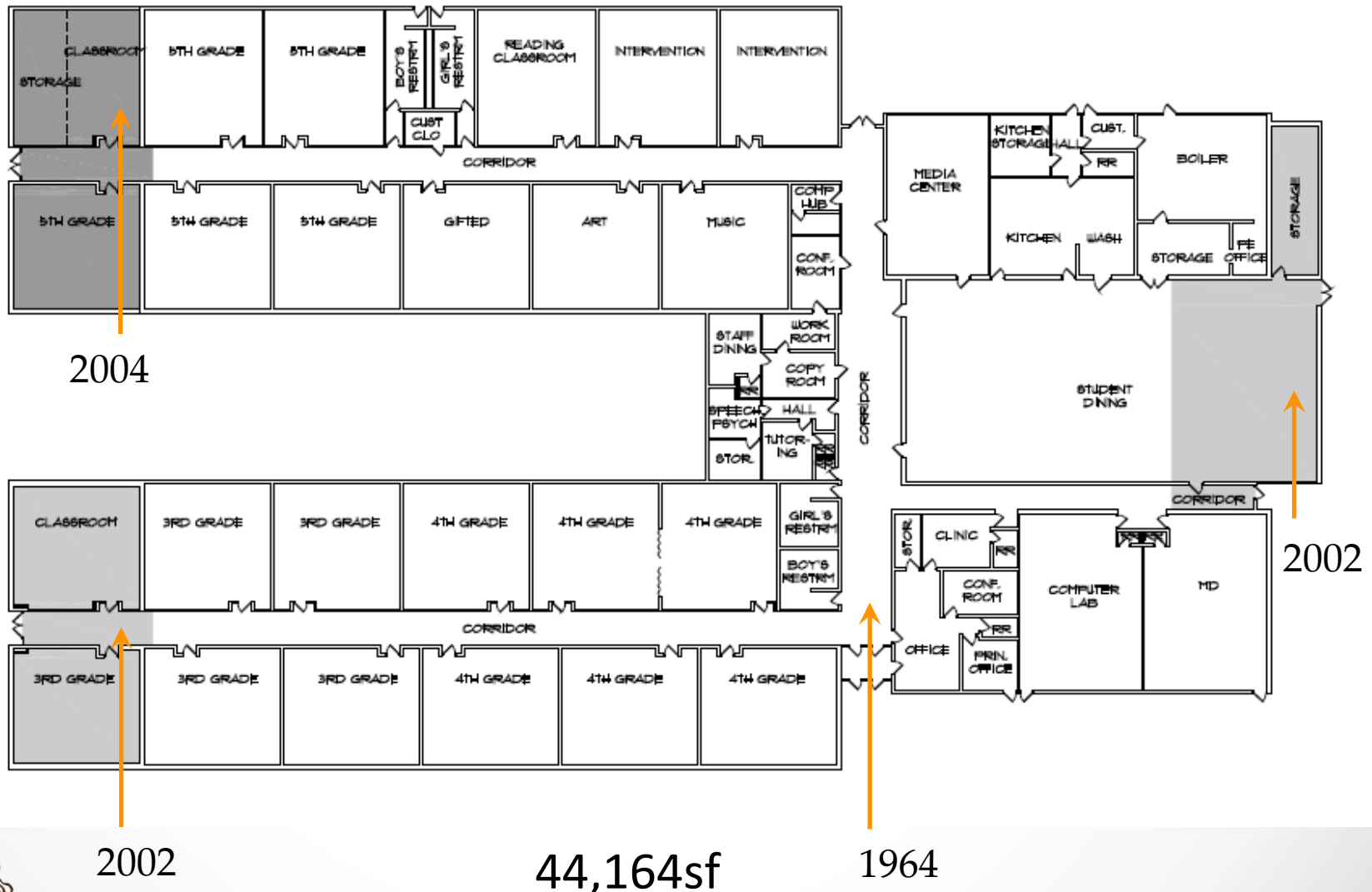
© 2016 Google

Google earth

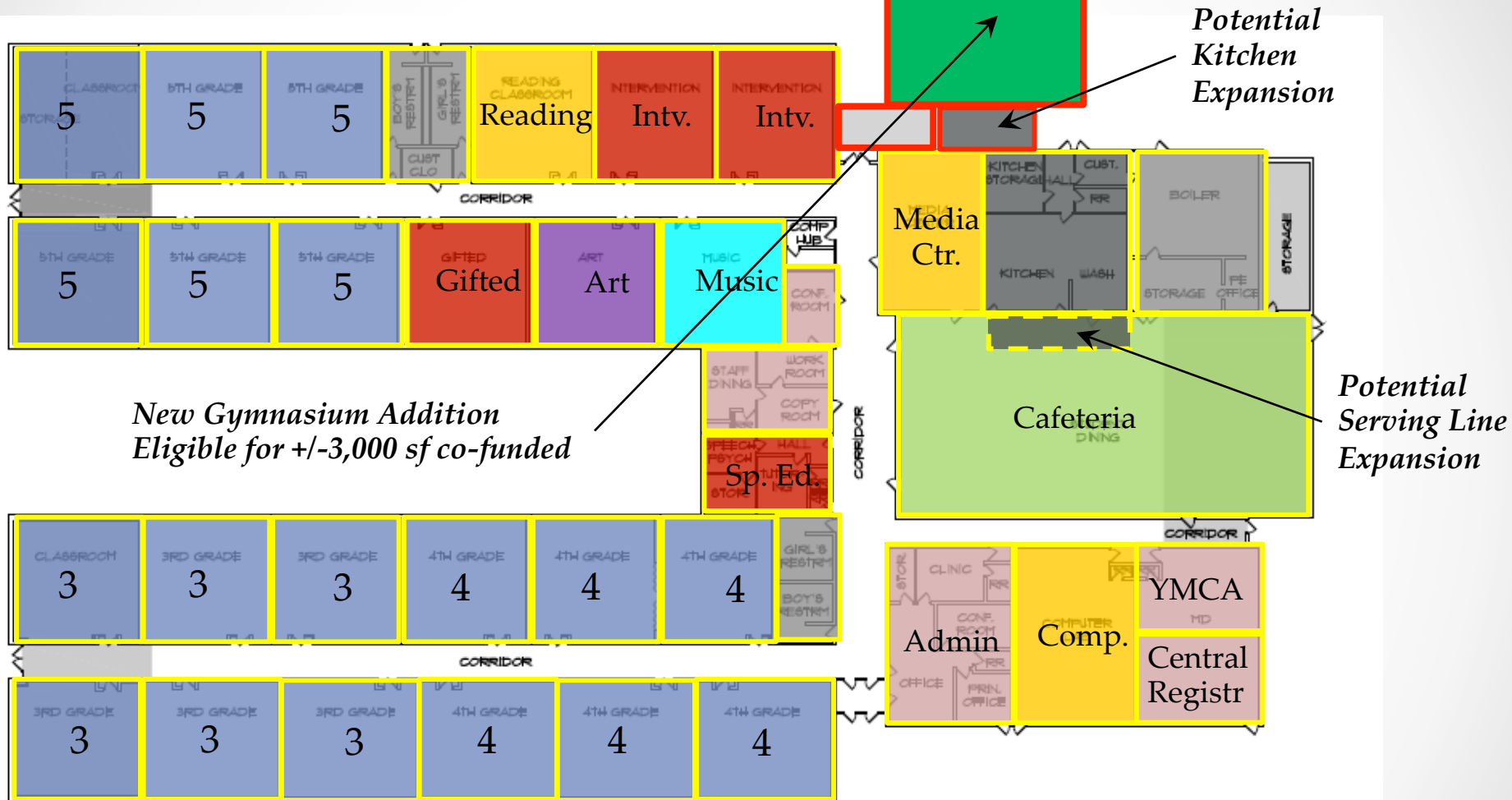
Stevenson Elementary



Stevenson Elementary



Stevenson Elementary – Potential Reprogramming



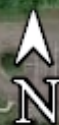
Stevenson Elementary - Assessment

Total Renovation Cost: **\$7.4 million**

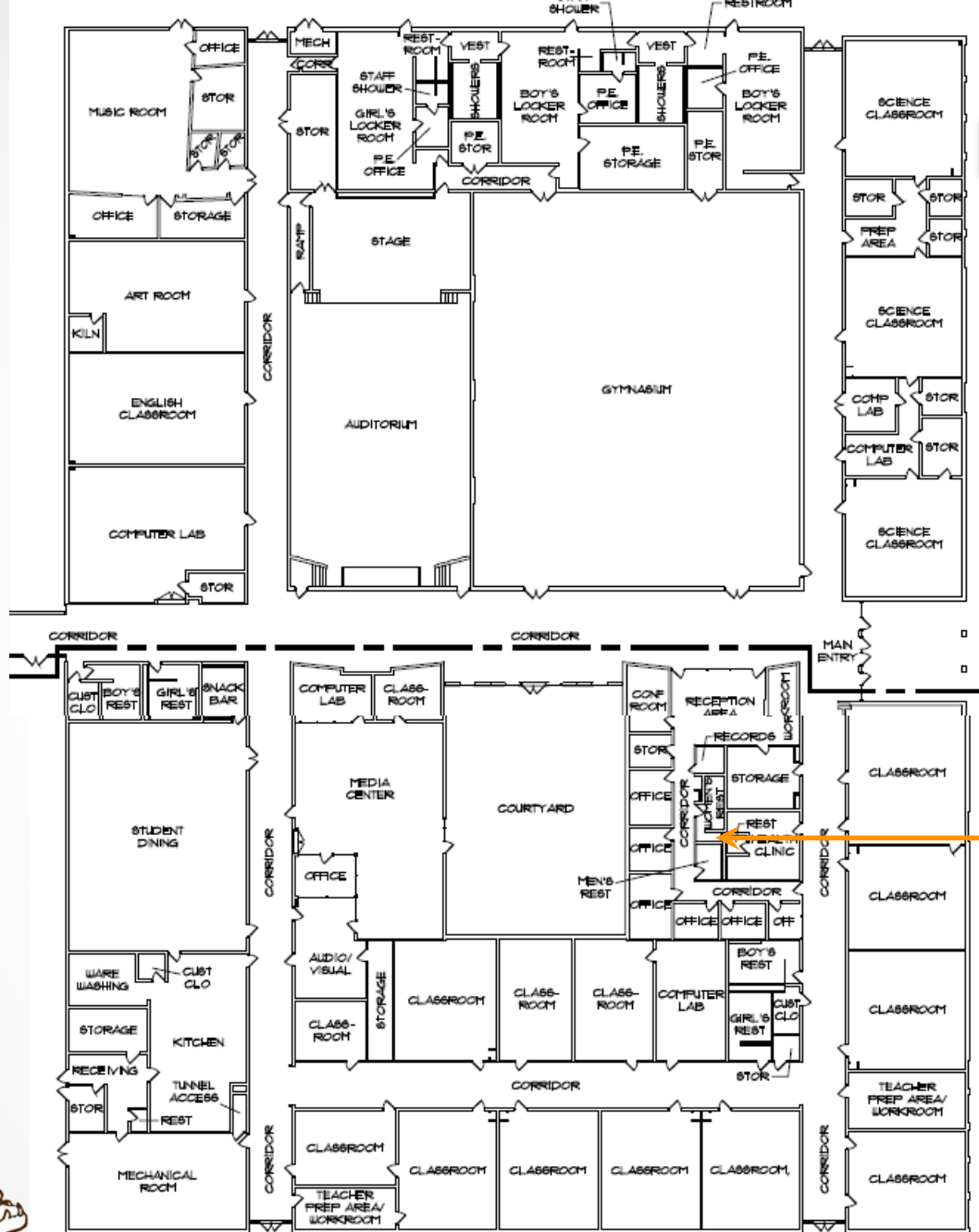
■ HVAC	\$1,500,000
■ Roofing	\$ 683,000
■ Electrical systems	\$ 607,000
■ Finishes	\$1,046,000
■ Lighting	\$ 220,000
■ Handicap access	\$ 145,000
■ Life Safety	\$ 191,000
■ Loose Furnishings	\$ 112,000
■ Technology	\$ 581,000



Heath Middle School



Heath Middle School

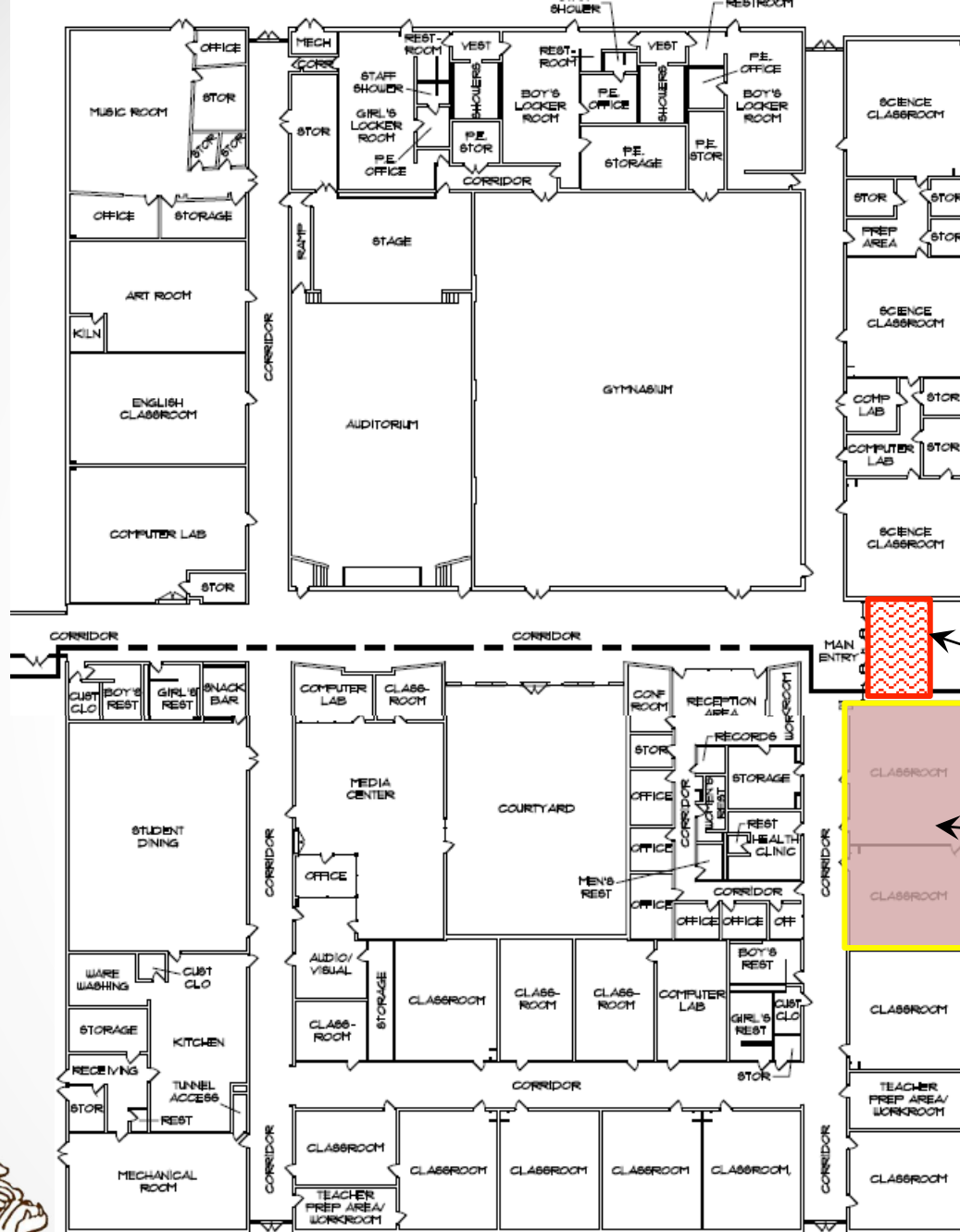


1962

66,617sf



Heath Middle School Potential Reprogramming



Security Vestibule

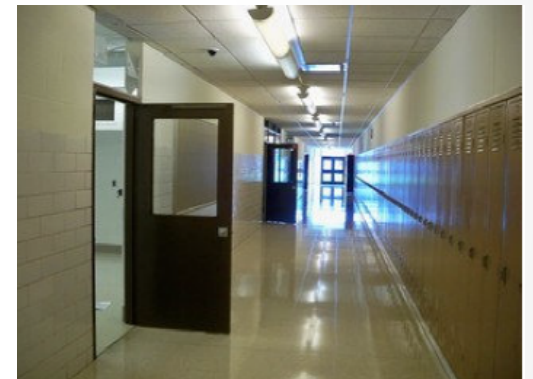
Reprogram to Admin



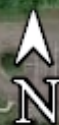
Heath Middle School - Assessment

Total Renovation Cost: \$11.3 million

■ HVAC	\$2,272,000
■ Roofing	\$ 961,000
■ Electrical systems	\$1,081,000
■ Finishes	\$1,672,000
■ Lighting	\$ 333,000
■ Handicap access	\$ 302,000
■ Life Safety	\$ 230,000
■ Loose Furnishings	\$ 317,000
■ Technology	\$ 685,000



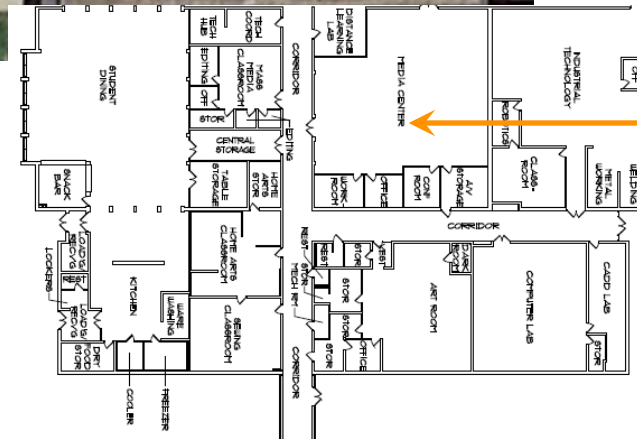
Heath High School



Heath High School



2002



1962

119,466sf



Heath High School - Assessment

1962 Renovation Cost: \$3.7 million

■ HVAC	\$ 850,000
■ Roofing	\$ 340,000
■ Electrical systems	\$ 21,000
■ Finishes	\$ 476,000
■ Lighting	\$ 125,000
■ Handicap access	\$ 1,800
■ Life Safety	\$ 130,000
■ Loose Furnishings	\$ 50,000
■ Technology	\$ 220,000





HEATH CITY SCHOOLS

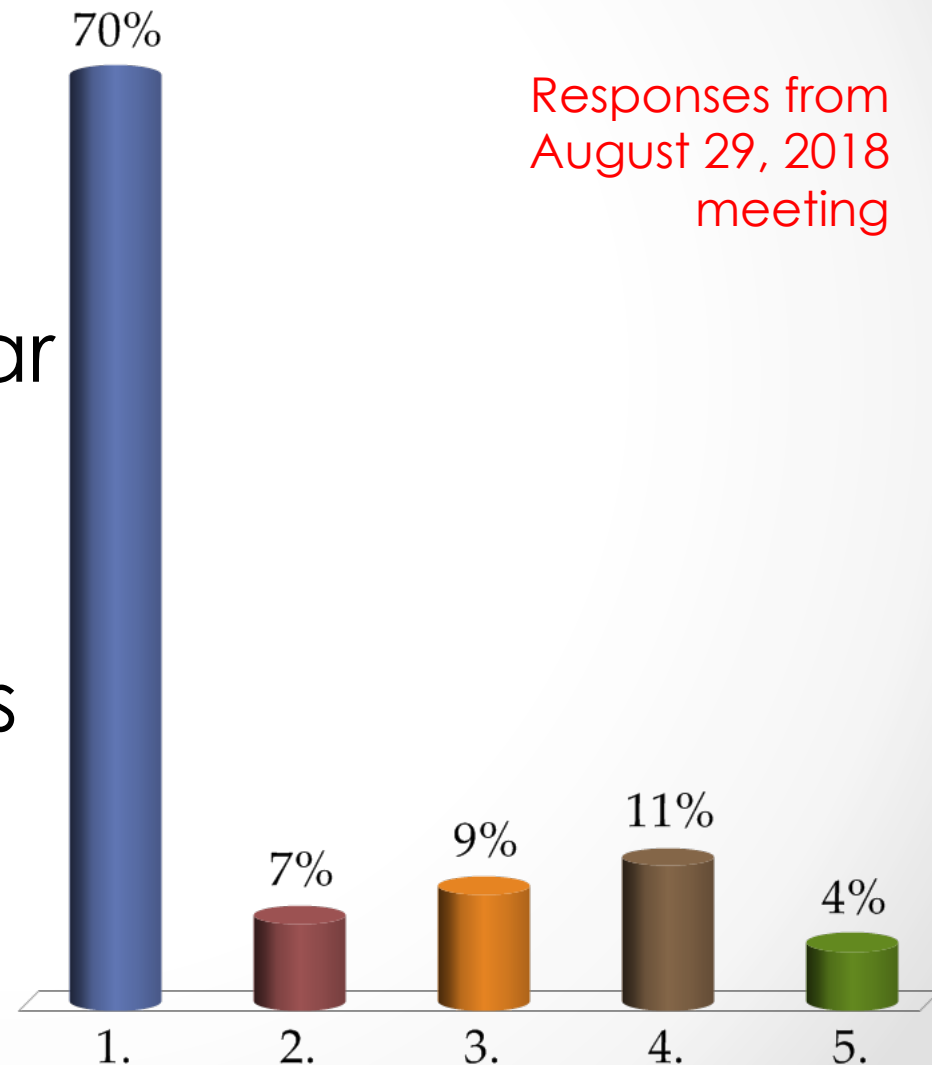


Community Meeting Recap
August 29, 2018

FANNING HOWEY

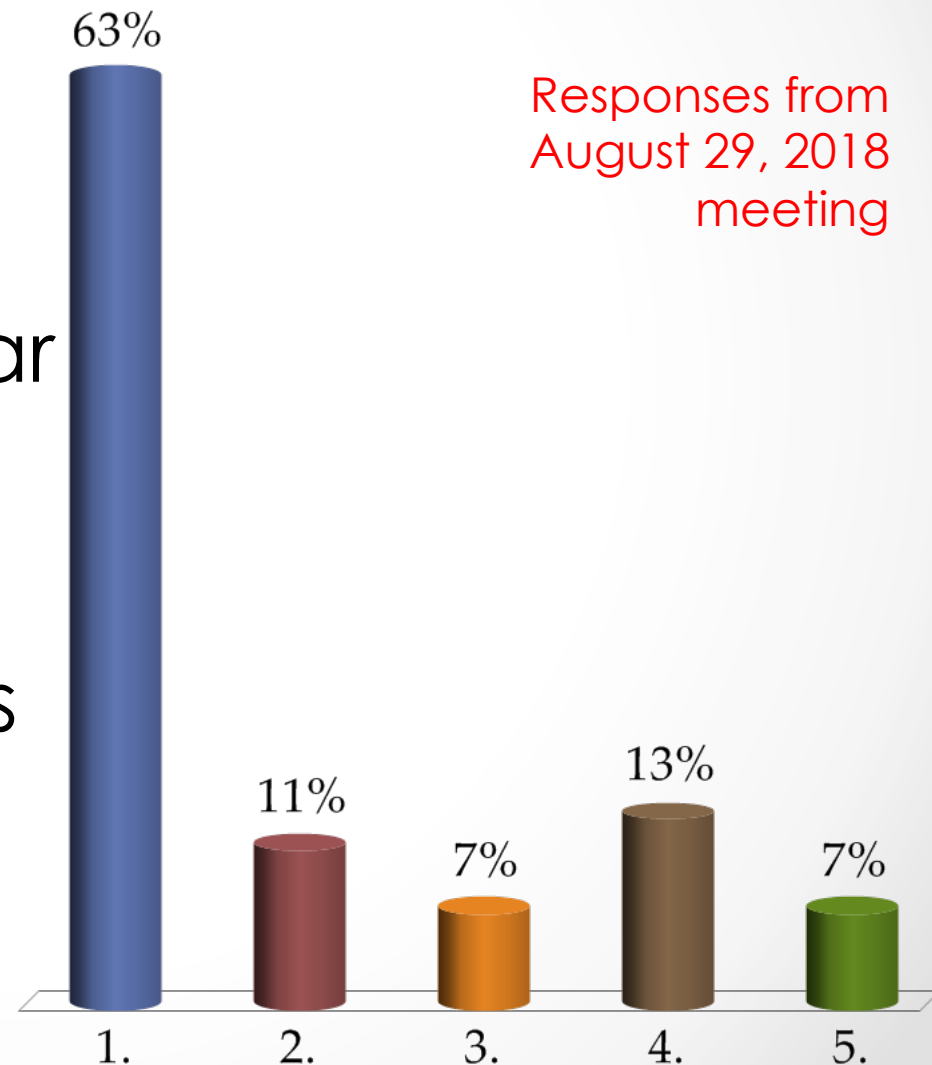
When was the last time you were in a classroom at Stevenson Elementary?

1. Within the last 6 months
2. Within the last year
3. Within the last 3 years
4. More than 3 years
5. Never

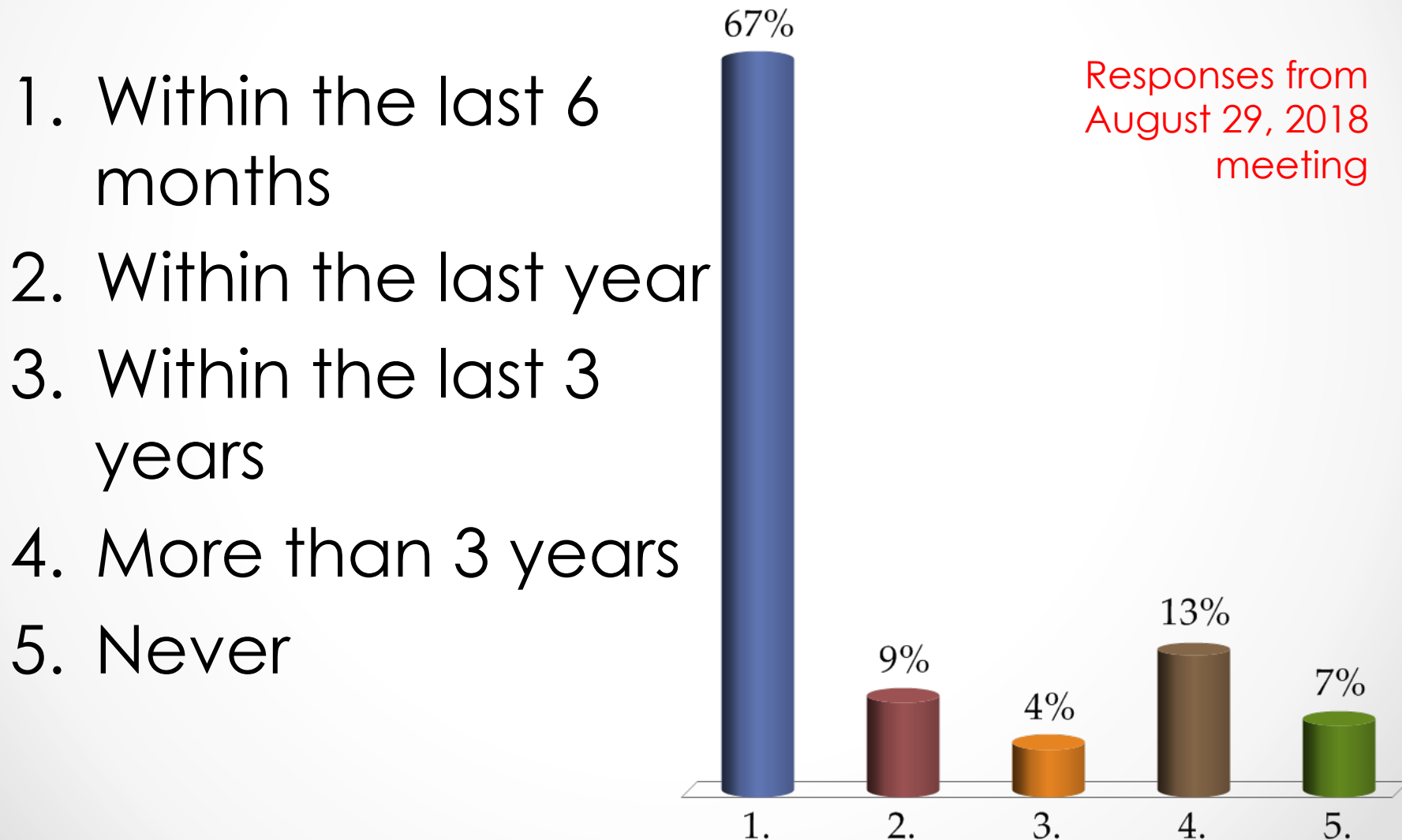


When was the last time you were in a classroom at Garfield Elementary?

1. Within the last 6 months
2. Within the last year
3. Within the last 3 years
4. More than 3 years
5. Never

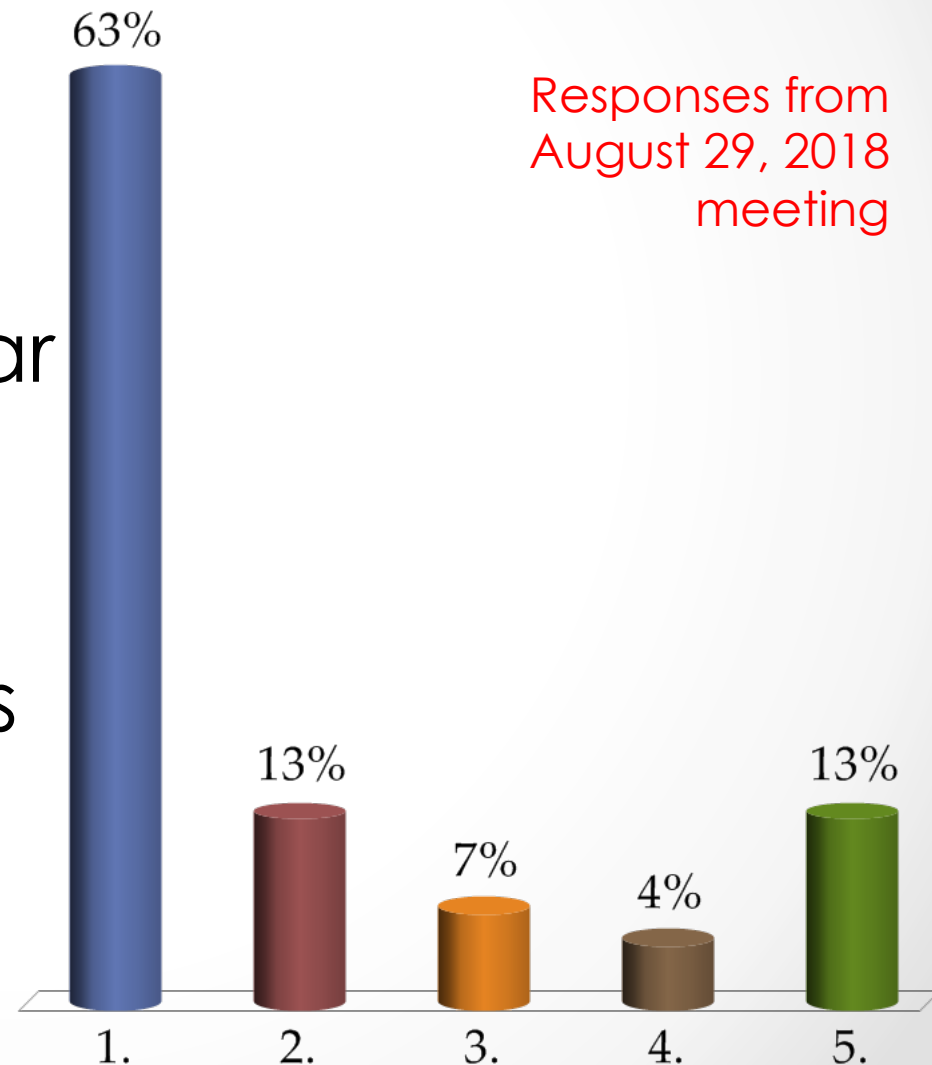


When was the last time you were in a classroom at Heath MS?



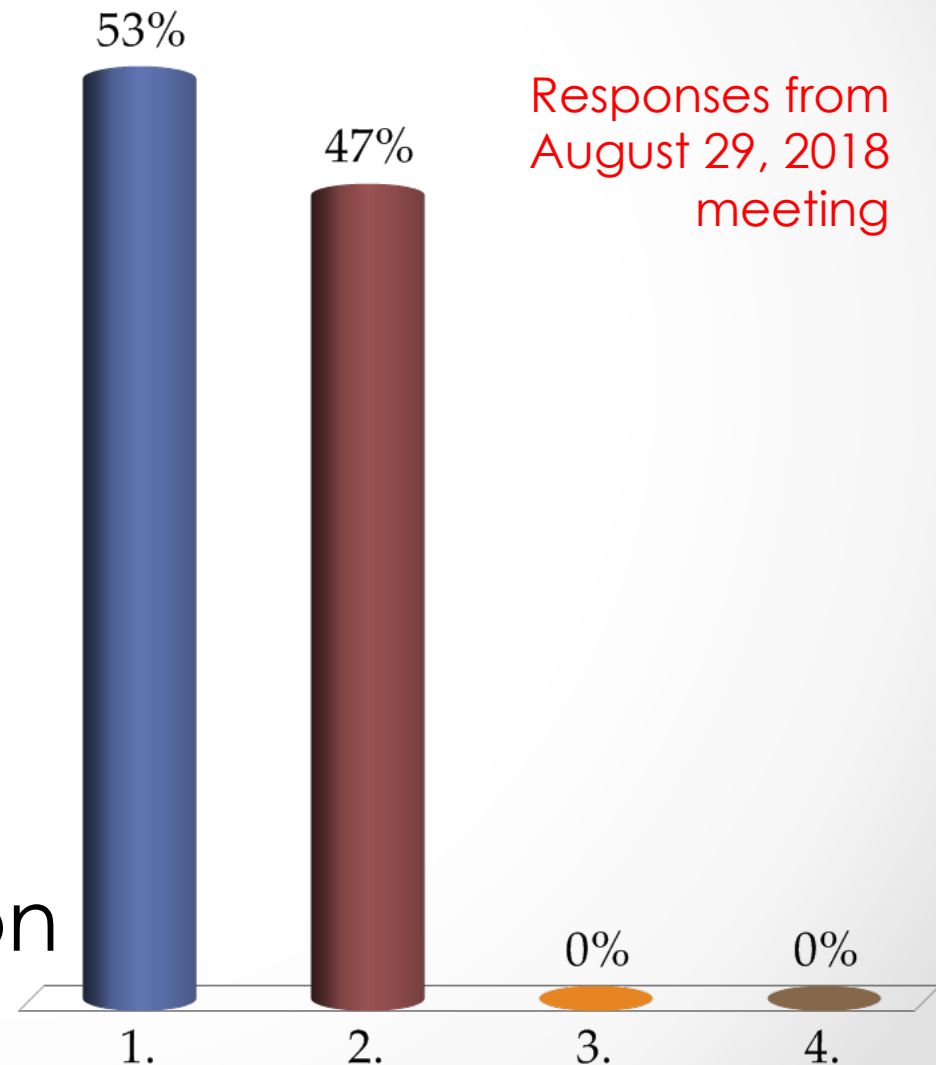
When was the last time you were in a classroom at Heath HS?

1. Within the last 6 months
2. Within the last year
3. Within the last 3 years
4. More than 3 years
5. Never



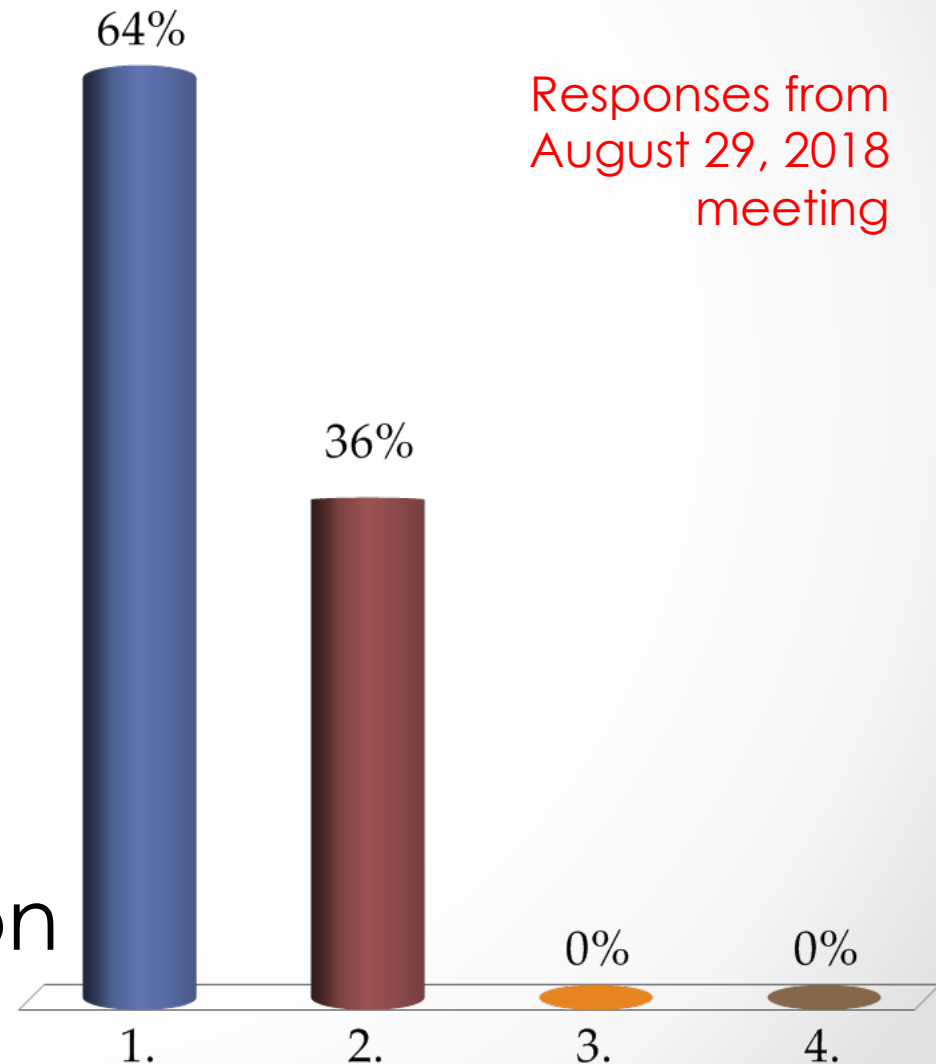
Based on what you know now, what is your perception of Stevenson's building systems and infrastructure?

1. Needs to be replaced
2. Needs Major renovations
3. Needs Minor renovations
4. Excellent condition



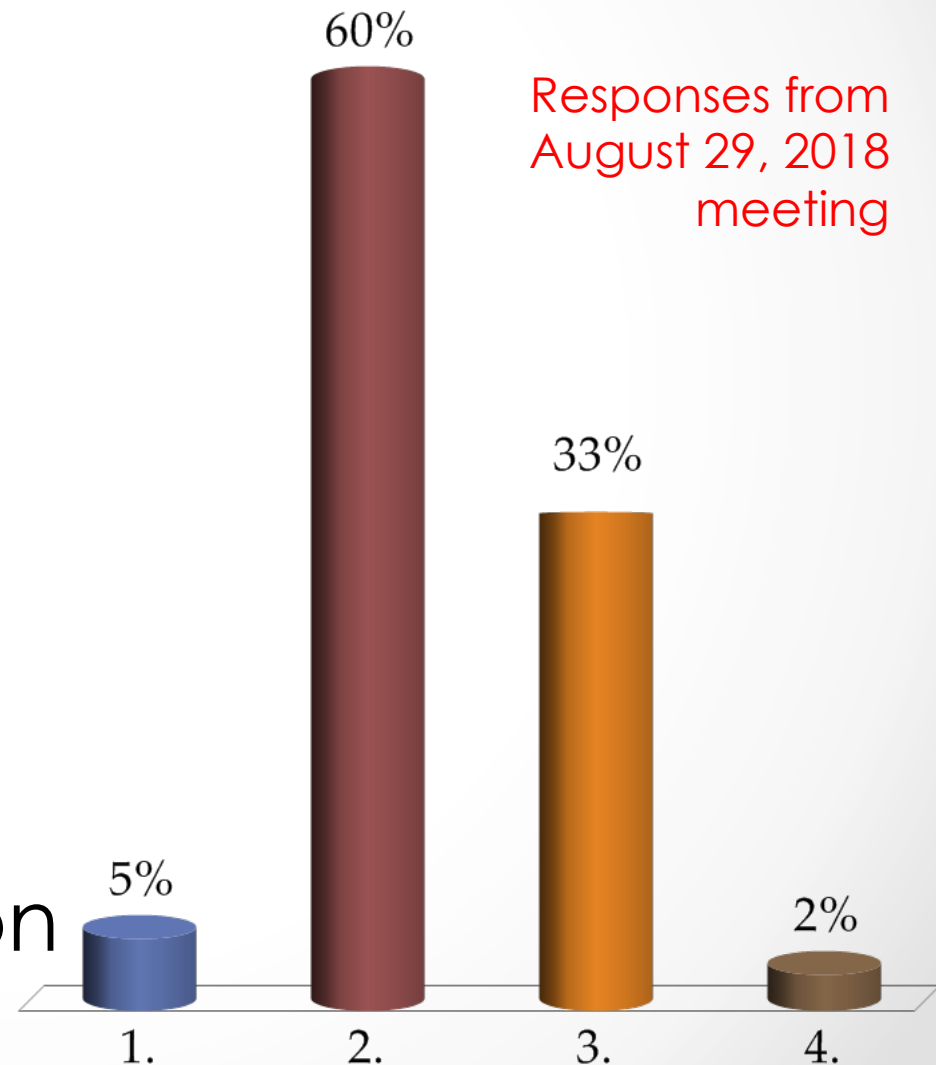
Based on what you know now, what is your perception of Garfield's building systems and infrastructure?

1. Needs to be replaced
2. Needs Major renovations
3. Needs Minor renovations
4. Excellent condition



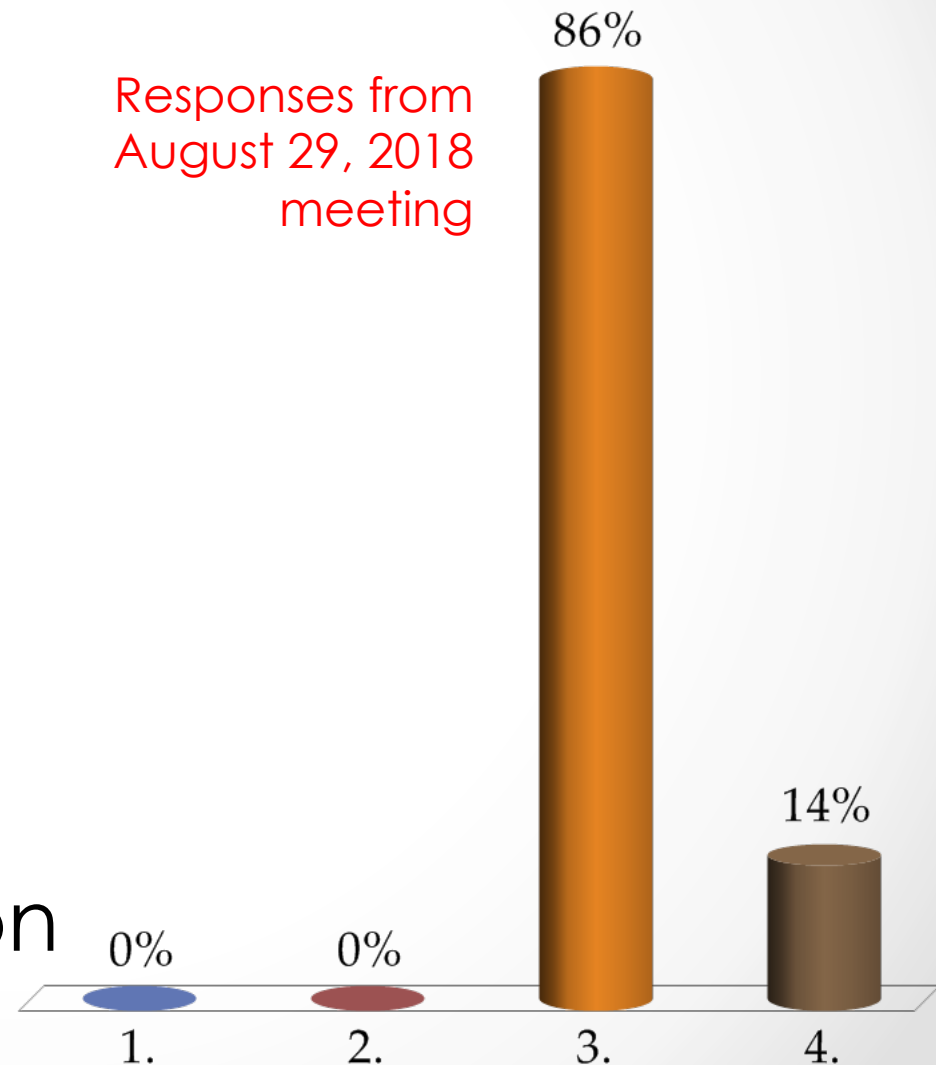
Based on what you know now, what is your perception of Heath MS building systems and infrastructure?

1. Needs to be replaced
2. Needs Major renovations
3. Needs Minor renovations
4. Excellent condition



Based on what you know now, what is your perception of Heath HS building systems and infrastructure?

1. Needs to be replaced
2. Needs Major renovations
3. Needs Minor renovations
4. Excellent condition



Group Work

- Middle School / High School
 - Do What?
 - When?
 - Priority vs. Elementary Schools
- Separate vs. Combined Elementary Schools
 - Pros / Cons
- Garfield vs. Stevenson site
 - Pros / Cons



Thank you for your time and questions!

Stay Connected

Questions: tthomas@heath.k12.oh.us

Website:

<https://heathschoolplan.wixsite.com/workingtogether>



HEATH
SCHOOLS
1961

ELEMENTARY SCHOOL PLANNING

Building the Best Schools for Our Kids' Future.

[Home](#) [About](#)

Welcome to our Facilities Planning team!

Over the next few months we will work together to determine the best solution to address our facilities needs in a way that supports the best learning environments for our students. That process will include meetings about our facilities and financing options. At the end of the process, we will present our findings to the school board to best support the growth of our students. Thank you in advance for sharing your thoughts and ideas.

Trevor Thomas
Ensuring students learn and grow is our collective responsibility.

Meeting Dates

Kickoff Meeting - August 29th 7PM - 8PM



Next

Future meeting dates:

- **October 10, 2018**
- November 7, 2018
- November 28, 2018

Consensus by December 2018/January 2019

Targeting potential for a May 2019 bond issue

